



1901 S. Charles Street

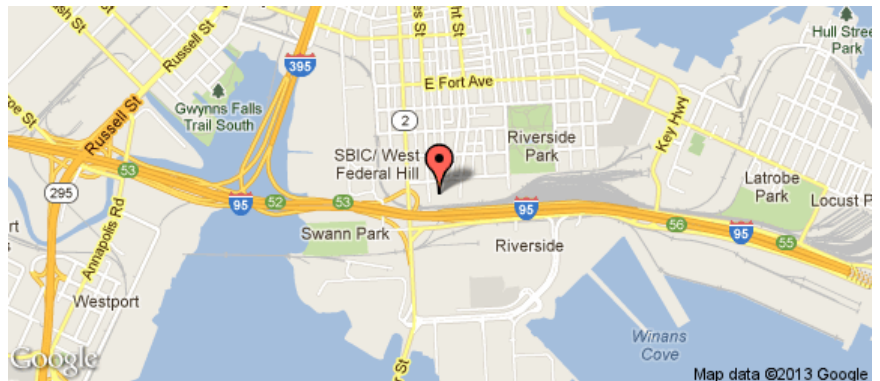
IMMEDIATE OCCUPANCY! Brand new contemporary urban apartment homes in SoBo. Come and discover what 1901 South Charles has to offer!

Community Amenities

- Resident-controlled access
- Elevator access
- Parking in multi-story, controlled access indoor structure
- 5,000 sq Resident's Club
- 24-Hour Fitness Center
- Yoga Studio / Wii Room
- Courtyard
- Large mail room
- Parcel lockers for deliveries
- Bicycle Storage

Other Amenities

- Contemporary floor plans, loft units available
- High-speed internet access available
- Digital cable TV available
- Energy efficient heating, air conditioning and UV-reducing windows
- Full-size washer/dryer
- 9 ft. ceiling standard
- Large Closets
- Upgraded flooring, including wood, wall-to-wall carpeting and ceramic tile
- Lightweight concrete soundproofing between floors
- Soundproofed walls between units and corridors



410-230-0999

Office Hours

Mon - Fri: 9:00 am - 6:00 pm

Sat: 11:00 am - 4:00 pm

Sun: 12:00 pm - 4:00 pm

1901 South Charles St,
Baltimore, MD 21230



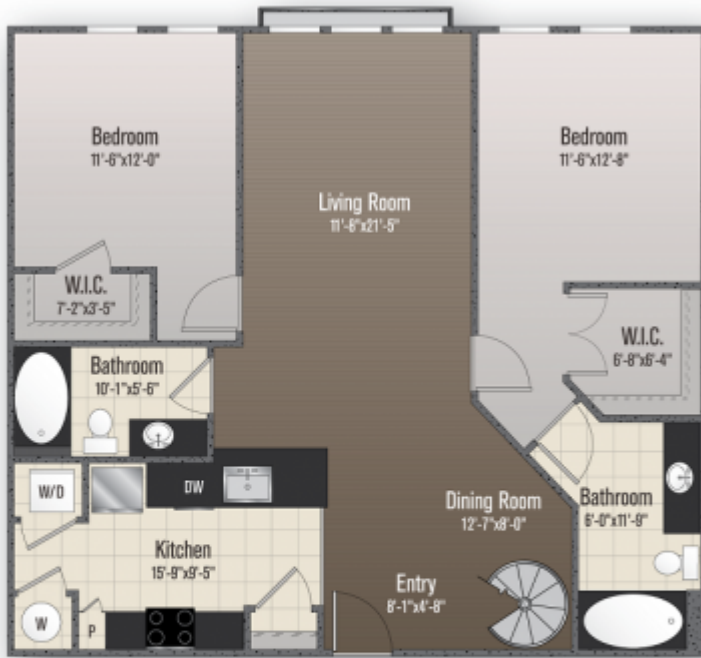
1901 S. Charles Street - The Lexington Loft

Rent: \$2400.00 - \$2420.00 *

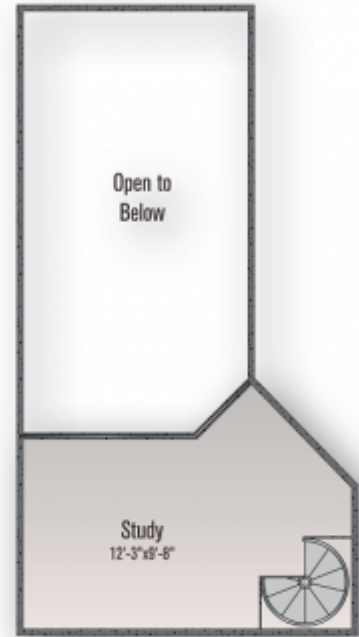
Availability: 7 Available

2 Bedrooms, 2 Bathrooms

SQFT: 1169 - 1266 ***



First Level



Upper Level



Hanover St., I-95 North & South, 295 South, M&T Bank Stadium, Oriole Park at Camden Yards, Sunset!



Charles St., Light St., Downtown, Federal Hill Restaurants, Purple Line Circulator, Downtown Skyline!



Half Acre Courtyard, 290 Dedicated & Controlled Access Parking Spaces, Water Views!



Riverside Park, Fort Ave., Southside Marketplace (Shoppers), Harris Teeter, Fort McHenry, Sunrise!

*Where shown, room dimensions are approximate "usable area", excluding closets and entries.

* Rates/Specials subject to change. Lease Terms vary. Contact Leasing Office for details.

** Security Deposit Requirements vary.

*** SQFT listed is an approximate value for each apartment.

410-230-0999

Office Hours

Mon - Fri: 9:00 am - 6:00 pm

Sat: 11:00 am - 4:00 pm

Sun: 12:00 pm - 4:00 pm

1901 South Charles St,
Baltimore, MD 21230

